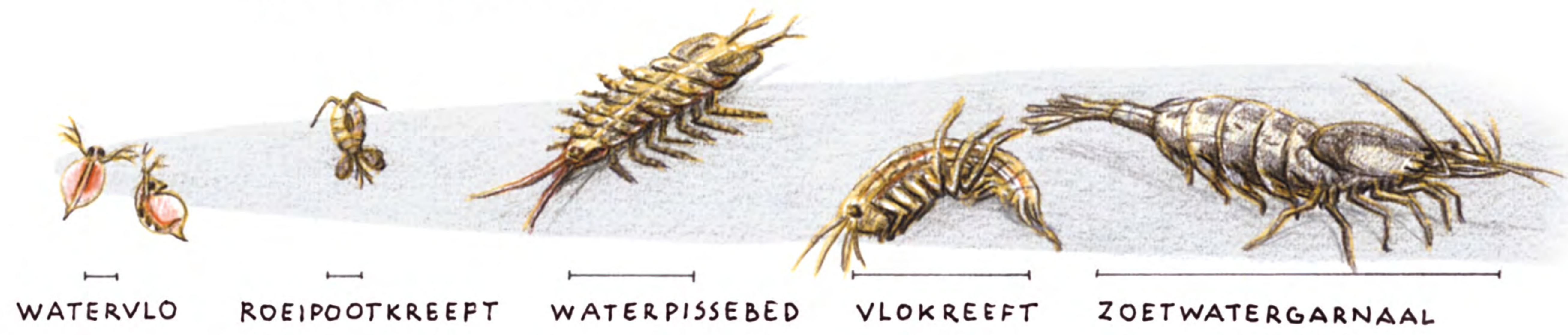


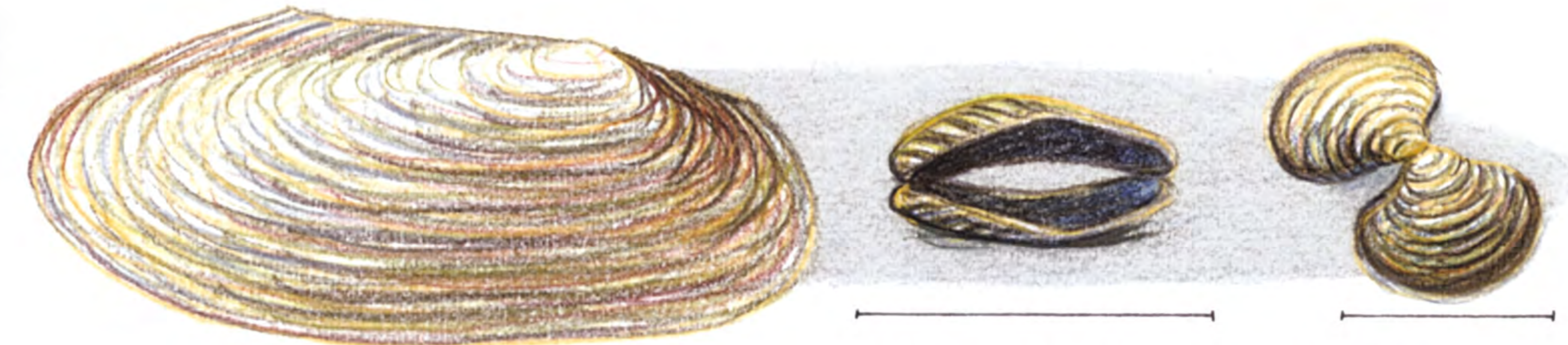
# WATERDIEREN

## SCHAALDIEREN



WATERVLO ROEIPOOTKREEPT WATERPISSEBED VLOKREEFT ZOETWATERGARNAAL

## MOSSELS



ZWANEMOSSEL (TOT 20CM)

DRIEHOEKSMOSSEL AZIATISCHE MOSSEL

## WATERSLAKKEN



POELSLAK EITJES POSTHOORNSLAK SCHIJFHOORNSLAK MOERASSLAK

## VISSEN



DRIEDOORNIG STEKELBAARSJE

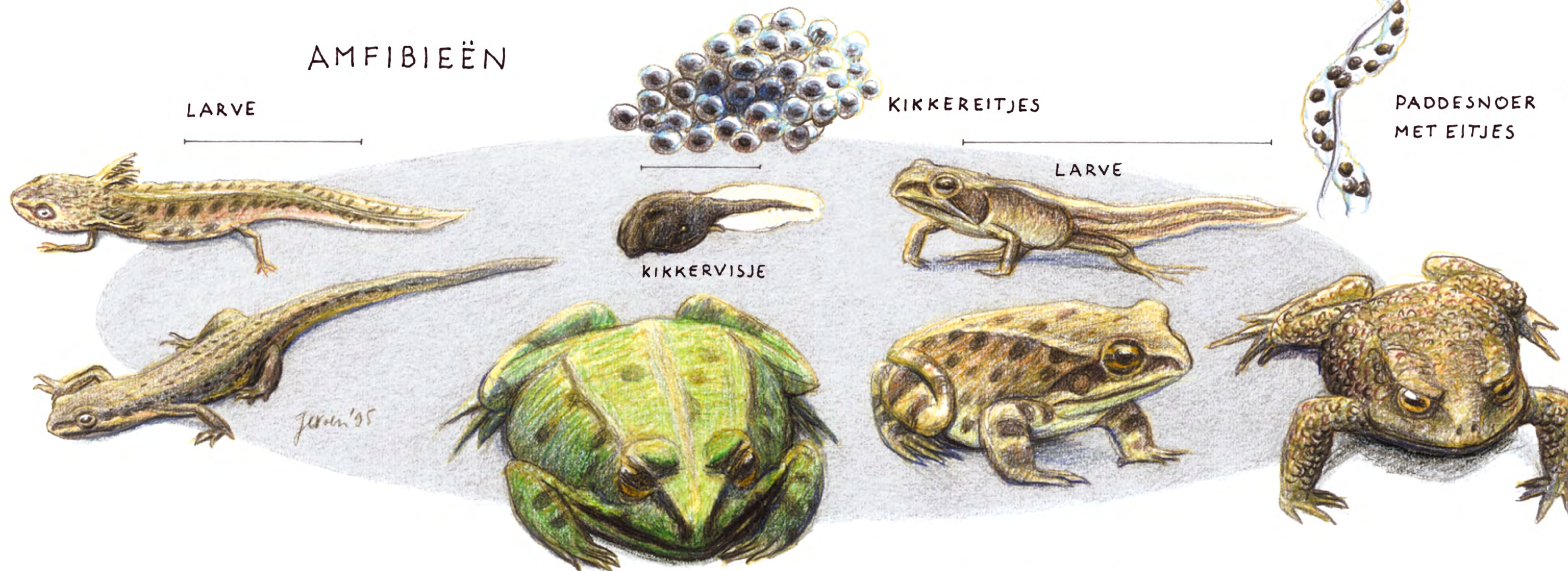


STEKELBAARSJE



HONDSVIJ

## AMFIBIEËN



LARVE

KIKKEREITJES

PADDESNOER MET EITJES

LARVE

KIKKERVISJE

KLEINE WATERSALAMANDER

GROENE KIKKER

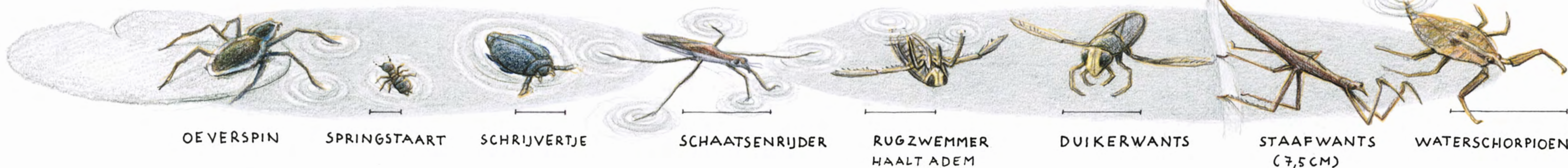
BRUINE KIKKER

GEWONE PAD



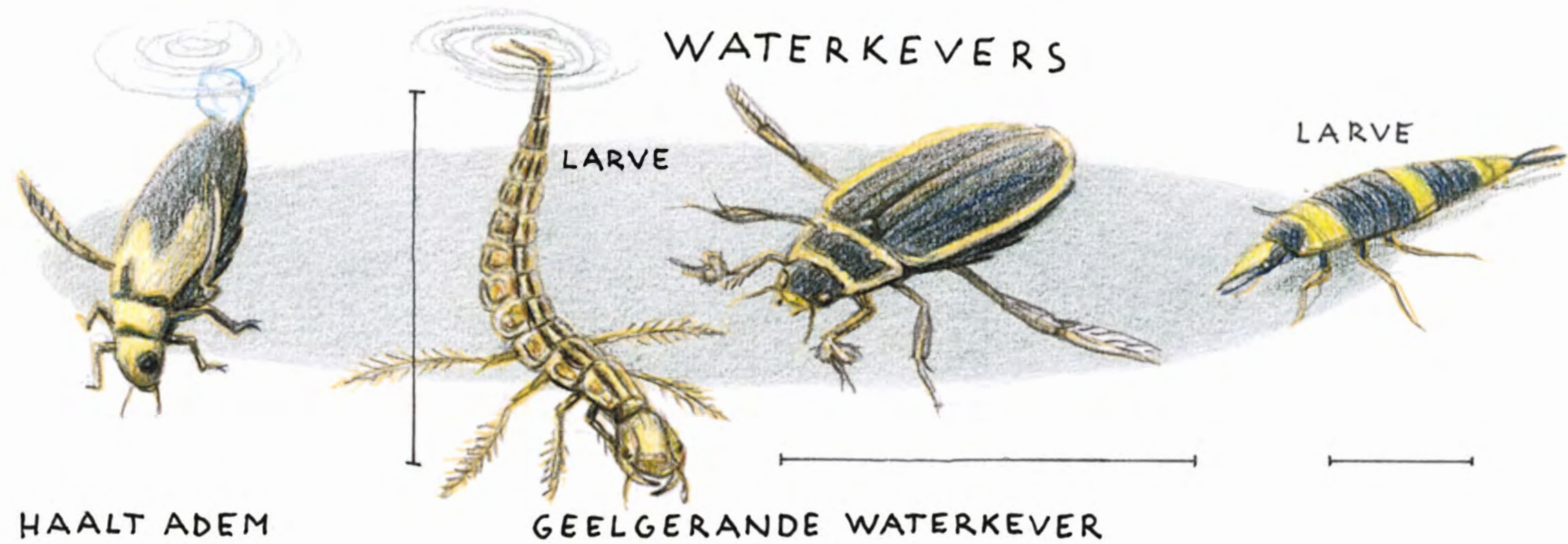
# WATERDIEREN

## DIEREN DIE OP HET WATER LOPEN

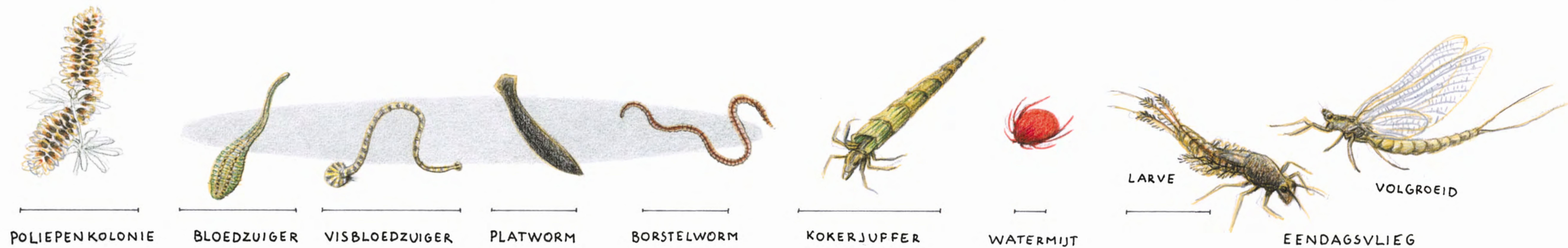
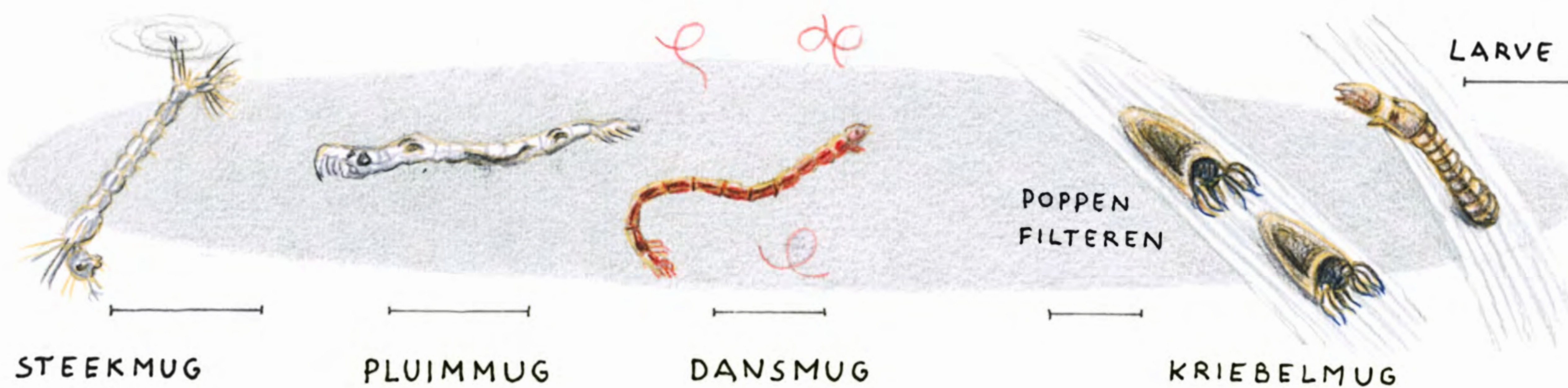


## WATERWANTSEN

## WATERKEVERS



## MUGGELARVEN



## LIBELLEN

